



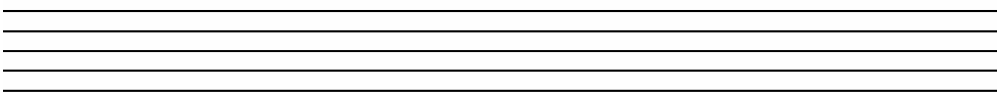
IDENTIFYING KEY SIGNATURES REVIEW

4. Write each major scale using accidentals instead of a key signature.

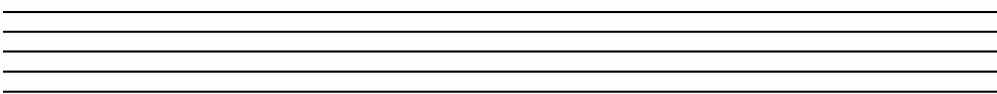
a) E major, treble clef



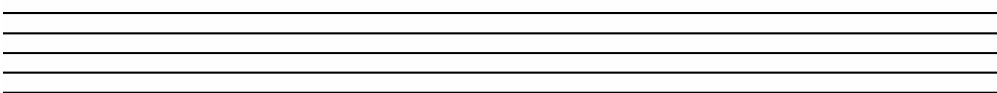
b) B major, treble clef



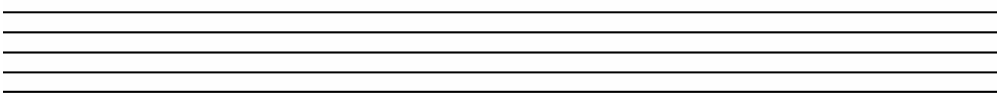
c) C# major, treble clef



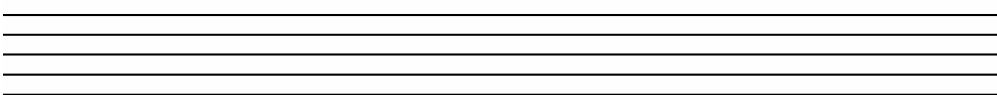
d) E♭ major, bass clef



e) D major, bass clef



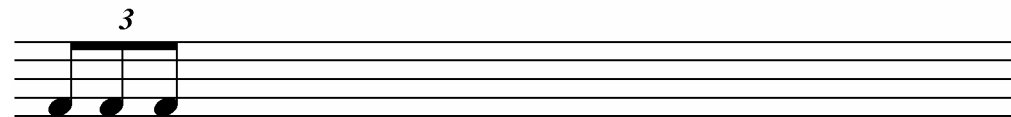
f) D♭ major, treble clef



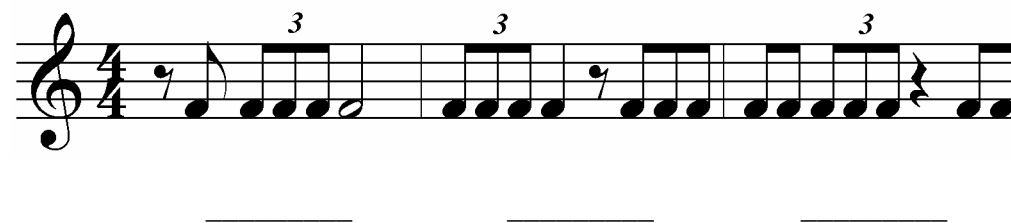
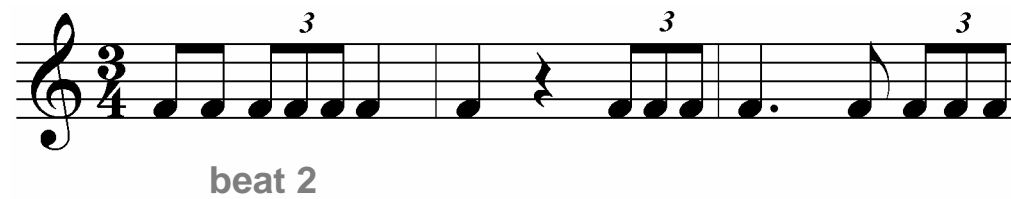
TRIPLETS



1. Practice writing triplets on the staff.



2. What beat is the triplet on in each measure?



3. Add the values of the notes and rests.

a) $\text{quarter note} + \text{triplet of eighth notes} = \underline{\hspace{2cm}}$ b) $\text{triplet of eighth notes} + \text{quarter note} + \text{quarter note} = \underline{\hspace{2cm}}$

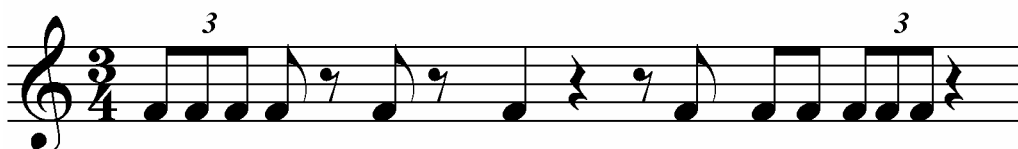
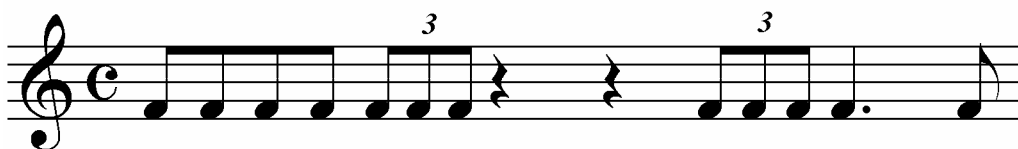
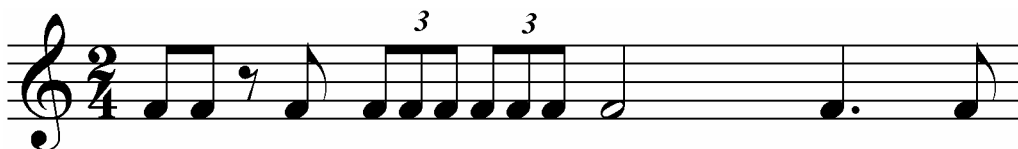
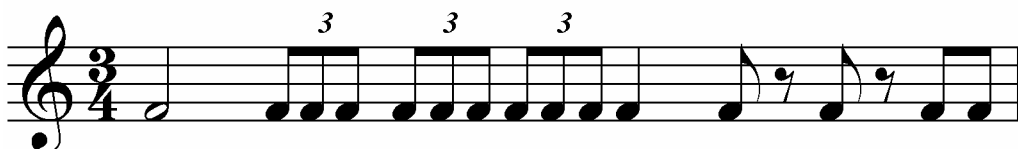
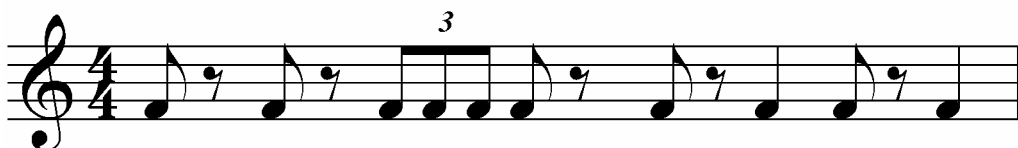
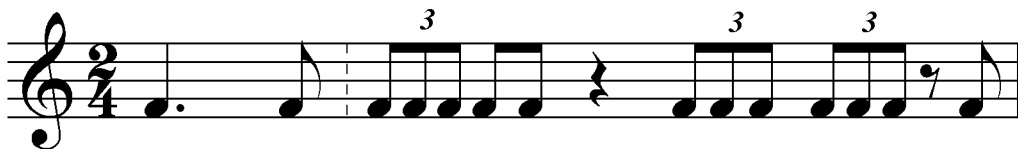
c) $\text{triplet of eighth notes} + \text{half note} = \underline{\hspace{2cm}}$ d) $\text{quarter rest} + \text{quarter note} + \text{triplet of eighth notes} = \underline{\hspace{2cm}}$

e) $\text{quarter rest} + \text{triplet of eighth notes} = \underline{\hspace{2cm}}$ f) $\text{quarter note} + \text{triplet of eighth notes} + \text{quarter note} = \underline{\hspace{2cm}}$



TRIPLETS

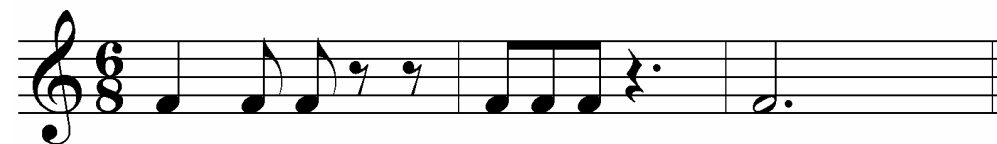
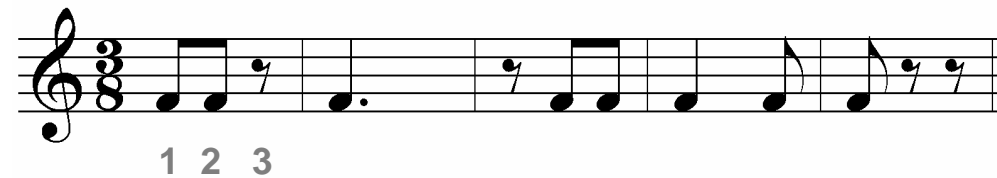
4. Add barlines in the correct places.



3/8 AND 6/8 REVIEW



1. Write the counting below the notes.



2. a) In 6/8 time, which beat is strong? _____
- b) Which beat is medium? _____
- c) Which beats are weak? _____

3. Identify the strong (S) and medium (M) beats in each measure.

